

# Unity™ Surfacing

A Unity Creations Co. Manufacturing Rubberized Safety Surfacing, Flooring and Paver Products

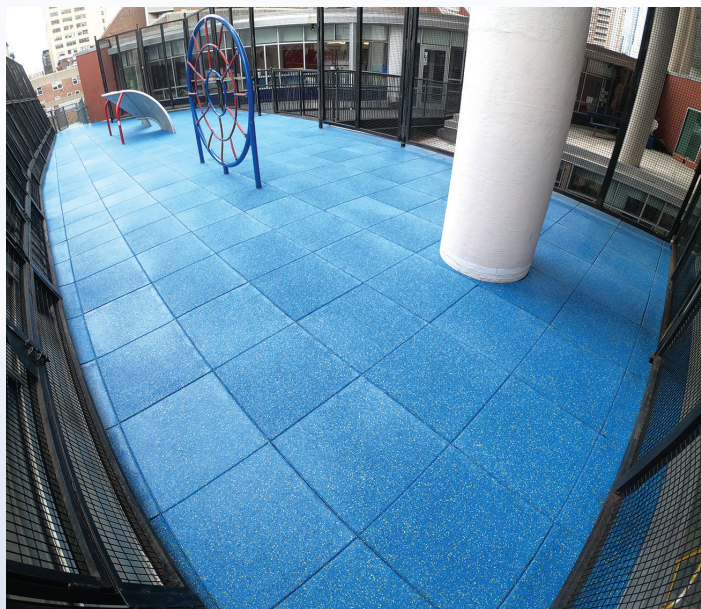
## PLAY-LAND 2.5

TILE  
MAT  
BLOCK  
PAVER  
SYSTEM

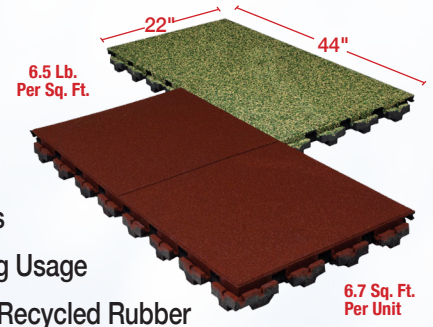
Our 2.5" thick Play-Land Series is designed to meet or exceed all of your project needs for use on medium height playground areas (yielding a 6 ft fall rating or less), rooftops, recreational areas, fitness facilities and more. It is the foundation for a smart, long-term investment in durability and beauty that will last for years to come.

As the industry leader, the superior raw materials we use, coupled with our proprietary manufacturing process, unique bottom design and large size product gives you the strongest, highest quality, environmentally friendly rubber tile system above all others.

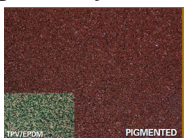
All of our products are independently laboratory tested with respect to ASTM, CPSC, ADA and Wind safety standards and guidelines to be installed over new and existing sub-bases and rooftop, both indoors and outdoors.



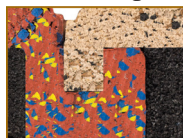
- Easy to Install
- ADA Compliant
- Water Permeable
- Little to No Maintenance
- Built-in Pedestal Designs
- Does not Displace During Usage
- Made In The USA Using Recycled Rubber
- Double Tiles Allows for Faster Installations
- Provides Thermal and Mechanical Protection
- Conforms to Any Low-Sloped Waterproofing Membranes
- Can Be Installed on Compacted Stone or Solid Sub-bases
- Staggered Locks Allow for Free-Flowing Designs & Layouts
- Ideal for Playgrounds, Rooftops, Fitness, Schools, Parks, Etc.



### High Density Wear Tops



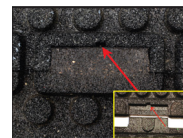
### Self Interlocking Design



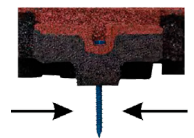
### New Bottom-Lock™ Technology



### Glue Reservoir



### Bolt-Down



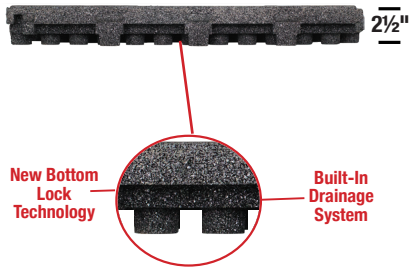
\*The Bolt-Down method of installation should only be used on solid ground level installations and not rooftops what-so-ever.



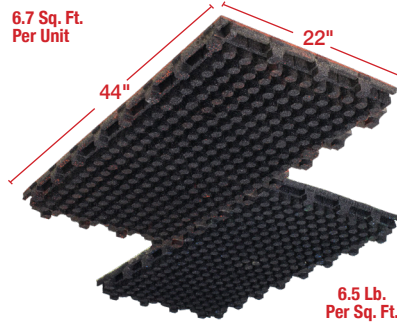


# Technical Information

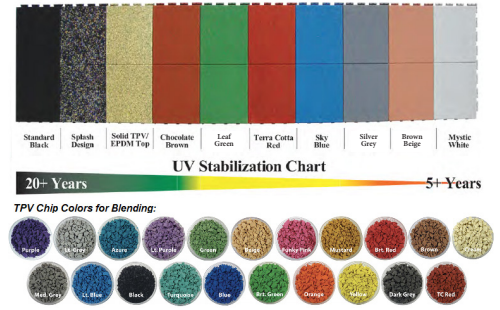
## Thickness:



## Bottom View:



## Color Types:



\*The bolt-down method of installation should only be used on solid ground level installations and not compacted stone bases nor rooftops what-so-ever.

## Testing:

| Testing Criteria:                      | Ref./Guide:                          | End Result:   | Testing Lab:       |
|--|--------------------------------------|---|--------------------|
| Impact Attenuation                     | ASTM F1292-04                        | Yielding a Six (6') foot Fall Height Protection Rating                      | DTL/Element        |
| Weathering/Aging                       | ASTMC67, D573                        | No Deterioration  | TUV                |
| Flamability                            | ASTM E108                            | Class A   | V-Tec              |
| Flamability                            | ASTM E108 for Roof Coverings         | Class A (Burn Stop @ 38 sec.)   | V-Tec              |
| Flamability                            | ASTM E648                            | Class 1 (0.45 watts/cm2)  | Govmark            |
| Burn Pill                              | ASTM 2859                            | 3.7"  | Govmark            |
| Skid Resistance                        | ASTM 303-93 (2013)                   | 67 Wet / 80.25 Dry  | V-Tec              |
| ADA Accessibility                      | ASTM 1951-99                         | 0.26 Firm / 0.28 Stability  | Beneficial Designs |
| R-Value (Thermal Con)                  | ASTM C518-98                         | 0.939 Con./2.4 Res. and <   | SGS                |
| Reflectance/SRI/Emittance              | ASTM E903, E891 and E1980            | 5.1-68.6 %Solar Ref./3-86 SRI   | Atlas              |
| Lead in Materials/Children's Products  | CPSC-CH-E1002-08                     | 2 ppm/ MDL  | SGS                |
| Water Penetration                      | Sustainable Storm Water Mgt./Run-off | 0.13 gal. Body/0.21 gal. Seam   | SGS                |
| Pull Force                             | ANSI/FM 4474 Approval, Appendix B    | 132 lbf Vertical / 39.7 lbf Horizontal                                      | SGS                |
| Wind Resistance                        | ASTM D3161-09                        | 150 mph for 2 hours   | PRI                |
| Class 4 Impact Resistance              | UL 2218, 2010                        | No damage, tearing, fracturing, cracking, splitting, rupture, crazing, etc. | PRI                |
| Tensile Strength, Elongation & Modulus | ASTM D412                            | 0.87 Tensile, 0.76 @ Break/71.5% Elongation, 92.4% @ Break/3.49 Modulus     | Element            |
| Tear Resistance                        | ASTM 624                             | 156 Peak Tearing Load / 11.3 Peak Tearing Strength                          | Element            |
| Taber Abrasion Index                   | ASTM D3389                           | 0.719   | SGS                |
| Durometer of Hardness                  | ASTM D2240                           | 54 Points Shore A   | Element            |
| Compression Deflection                 | ASTM D1667                           | 577 kPa @ 25% / 25.227 mm   | Element            |
| Coefficient of Thermal Expansion       | ASTM E831                            | .0013 in/Ft Per Degree  | Element            |
| Mass Per Area/Thickness/Density/Force  | ASTM D3676                           | 14.28 kg/m2 / 74pcf / 1262 kg/m2 / 1460 kPa                                 | Element            |
| Compression Resistance                 | ASTM D3574                           | 2.78 kN Load to Preset / 1030 kPa Compression Resistance                    | Element            |
| Constant Deflection Compression Set    | ASTM D3676 (13) D395                 | 99.9% Recovery  | Element            |

\*We undertake all assignments for our clients on a best efforts basis. Our findings and judgments are based on the information given to us using the lasted test methods available. We can only ensure the test results for the specific items tested. Unless otherwise noted in the deviations section of this report, all tests are performed in compliance with stated test method.

Local Dealer's (Rep's) Business Card Here



Unity Creations, Ltd.  
Unity Surfacing Systems  
3997 Rt. 9W (P.O. Box 9)  
Saugerties, NY 12477

T: (1-877) 41-Unity F: (845) 246-1700  
E-mail: [productinfo@surfacingssystems.com](mailto:productinfo@surfacingssystems.com)  
Internet: [www.surfacingssystems.com](http://www.surfacingssystems.com)

Unity believes that our products size, weight, durability, longevity, fall protection ratings (the highest in the industry), and ability to have an integrated self-interlocking feature (for rooftop applications), with bolt-down capabilities (for playground use), can be effectively and easily secured on site to eliminate the potential for wind-up-lift, vandalism and maintenance issues. Everyone at Unity Creations, Ltd. / Unity Surfacing Systems would like to thank you for your interest in our products and services.

[www.surfacingssystems.com](http://www.surfacingssystems.com)