

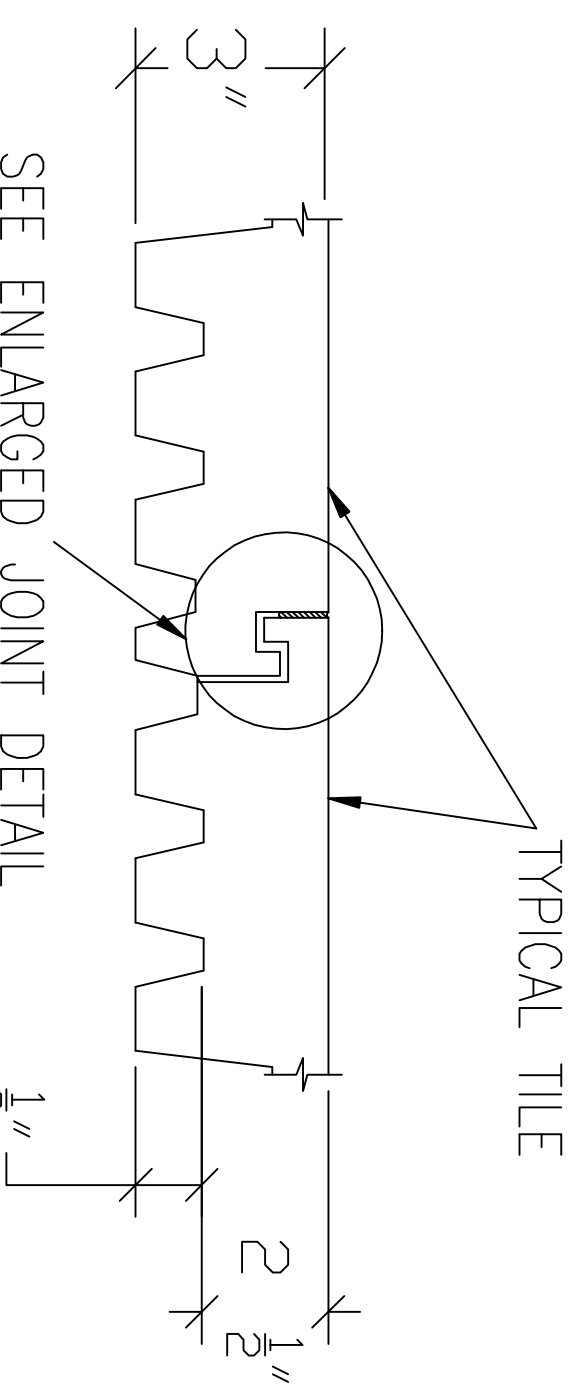
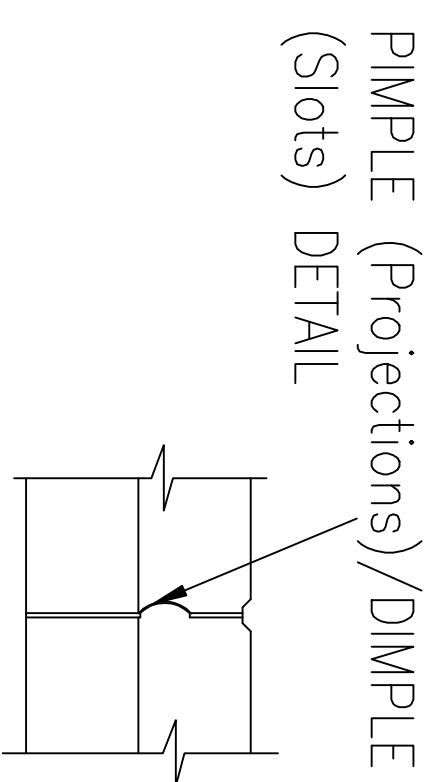
NOTE: MALE AND FEMALE INTERLOCKS ARE 3 3/4" WIDE WITH A 1" THICKNESS

3'-8" (44")

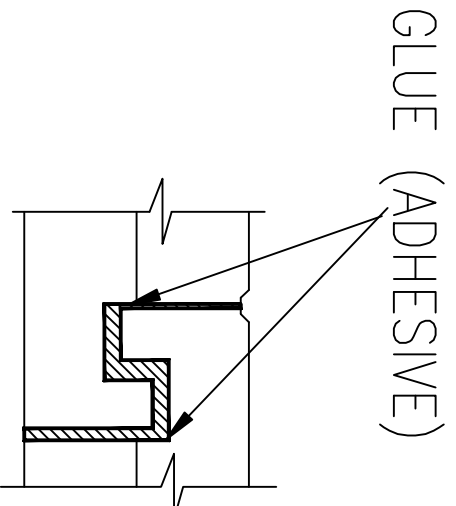
1'-10" (22")

TOP VIEW OF UNITY TILE/MAT/BLOCK/PAVER

BOTTOM VIEW OF UNITY TILE/MAT/BLOCK/PAVER



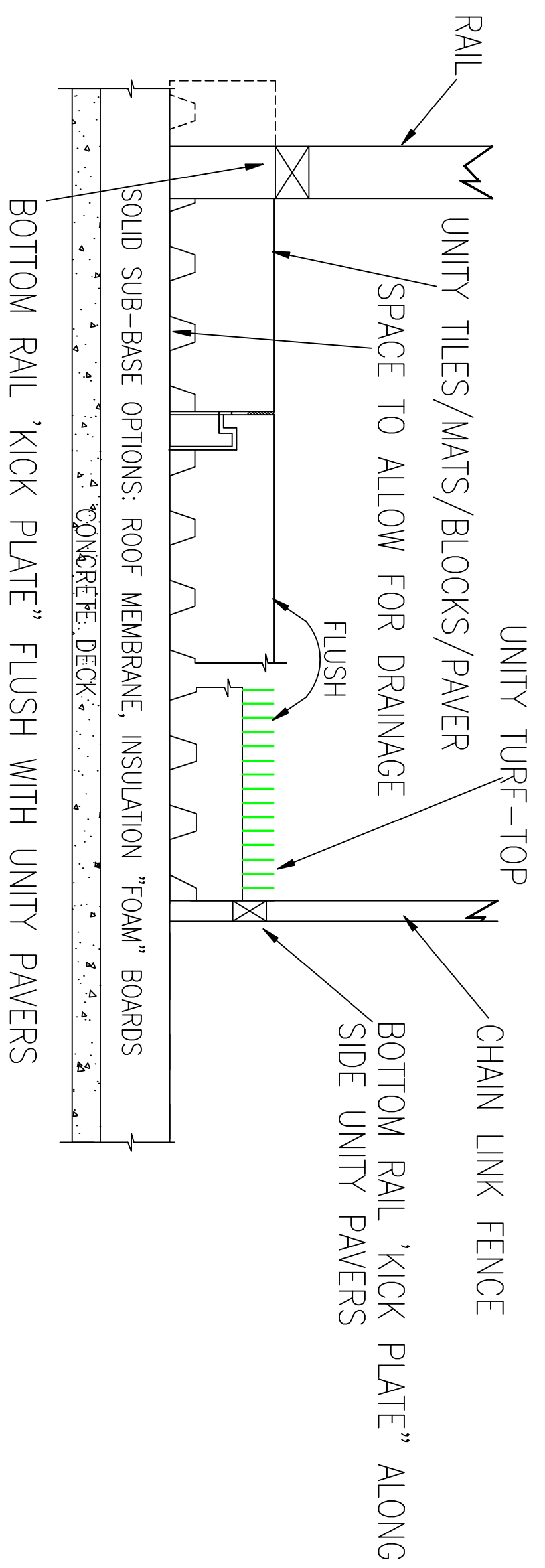
NOTE: FIELD APPLY ADHESIVE AT EACH INTERLOCK BOTH INSIDE THE JOINT AND ON TOP (OUTSIDE EDGE)



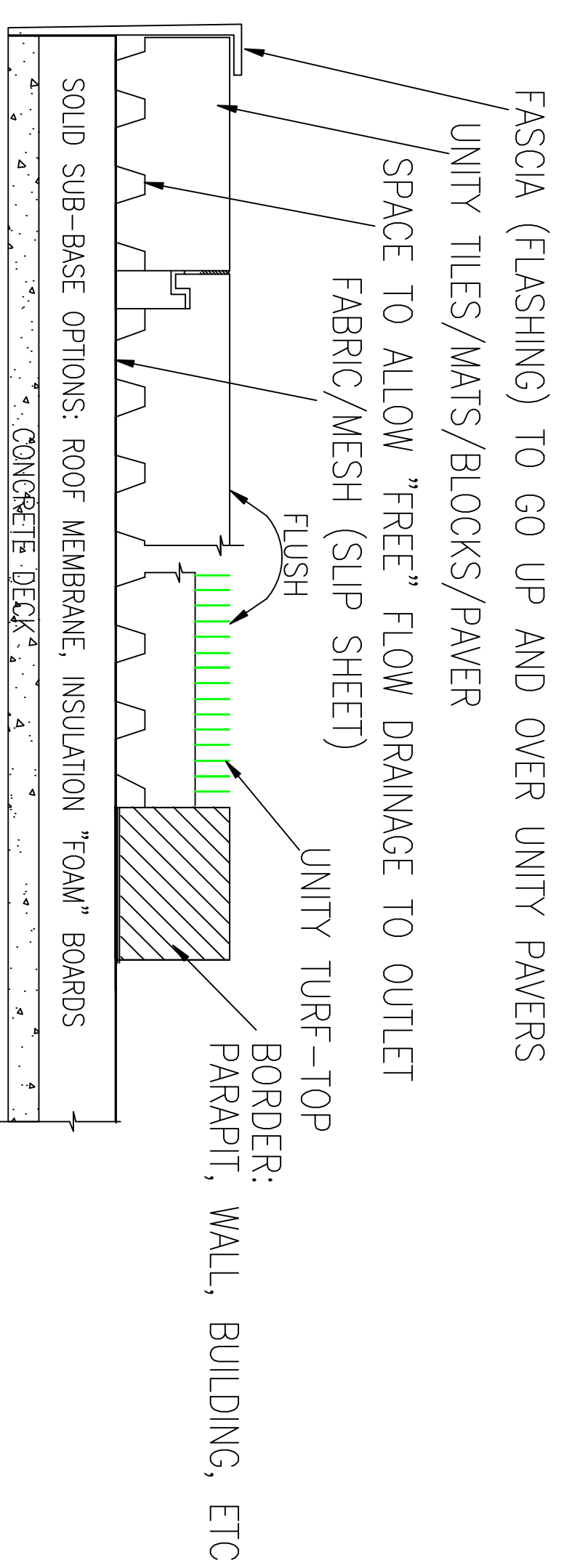
JOINT DETAIL AT PIMPLE (Projections)/DIMPLE (Slots)

TYPICAL TILE JOINT DETAIL

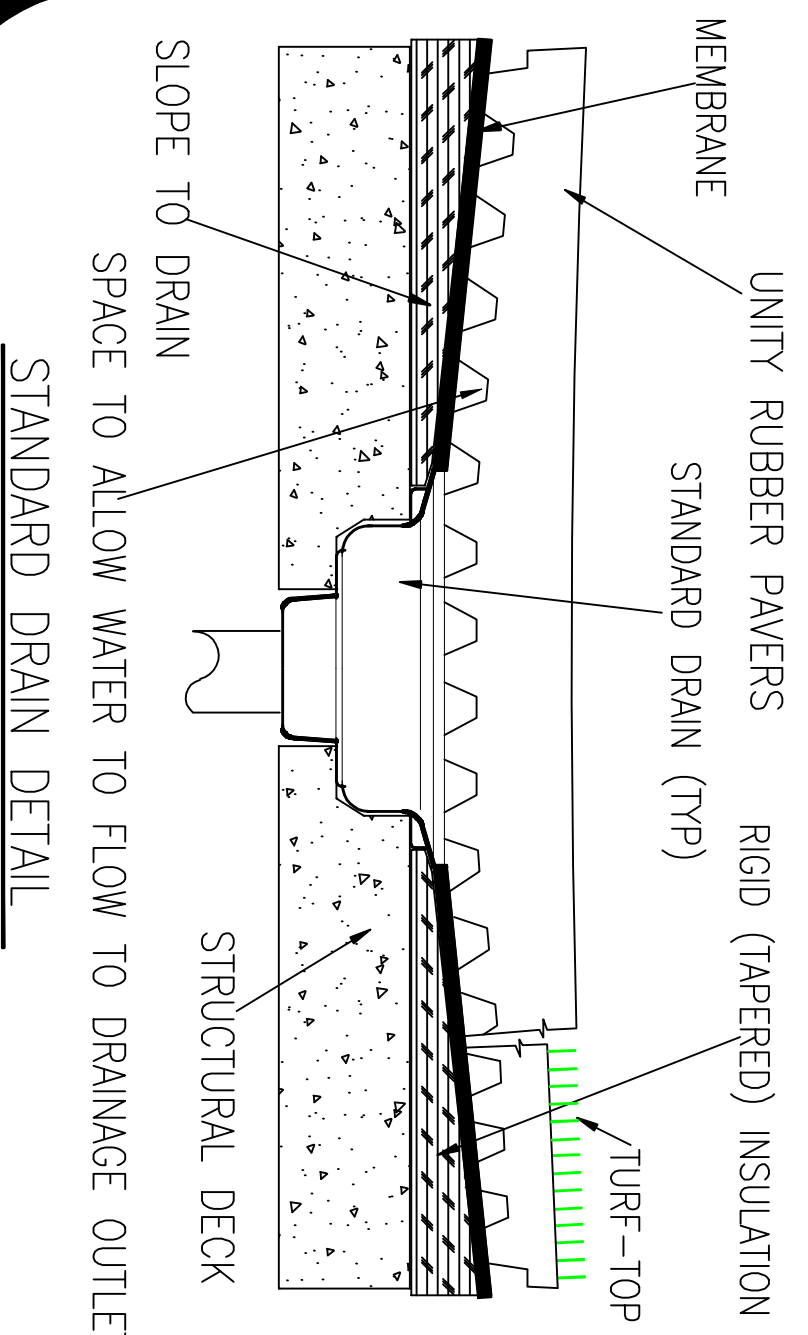
ENLARGED INTERLOCK JOINT DETAIL



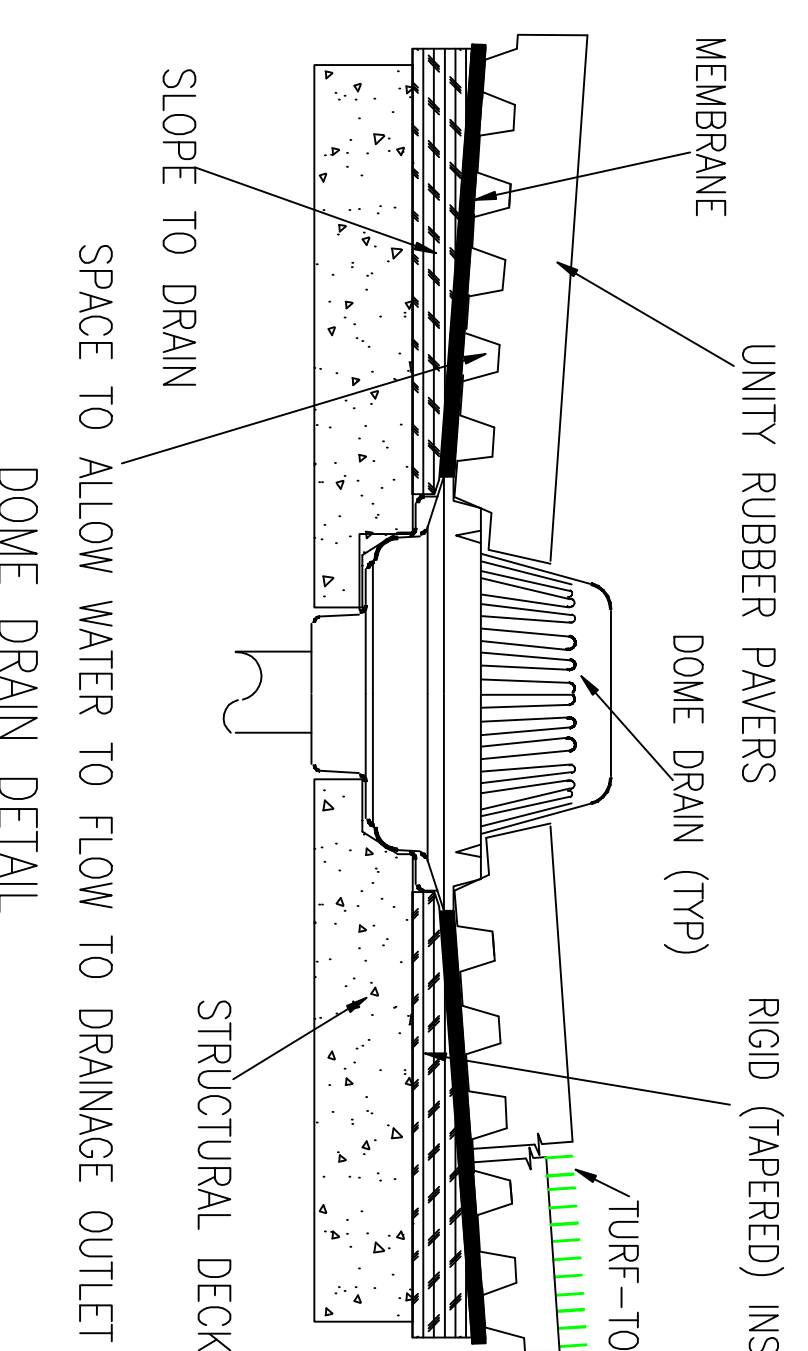
SIDE VIEW OF RAIL AND/OR FENCE DETAIL



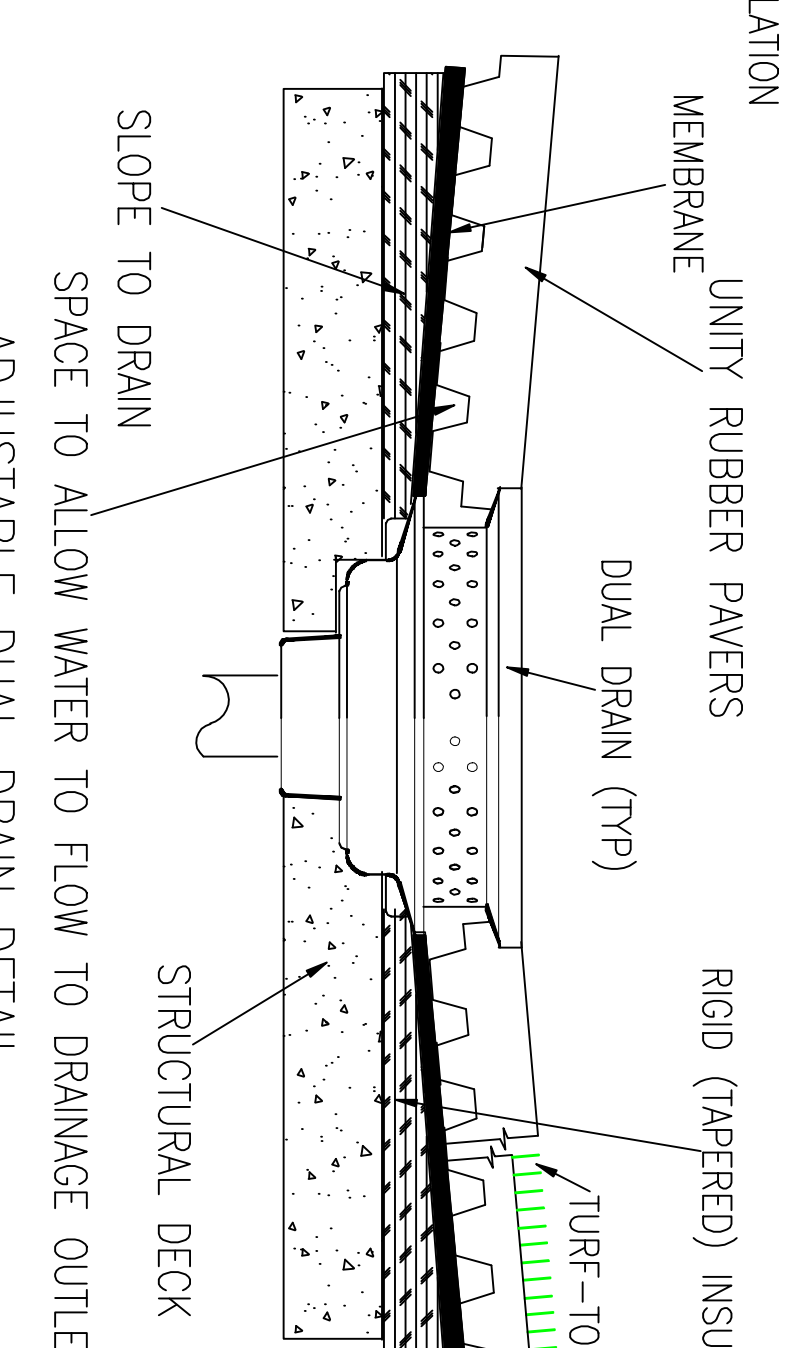
SIDE VIEW OF FASCIA AND/OR BOARDER DETAIL



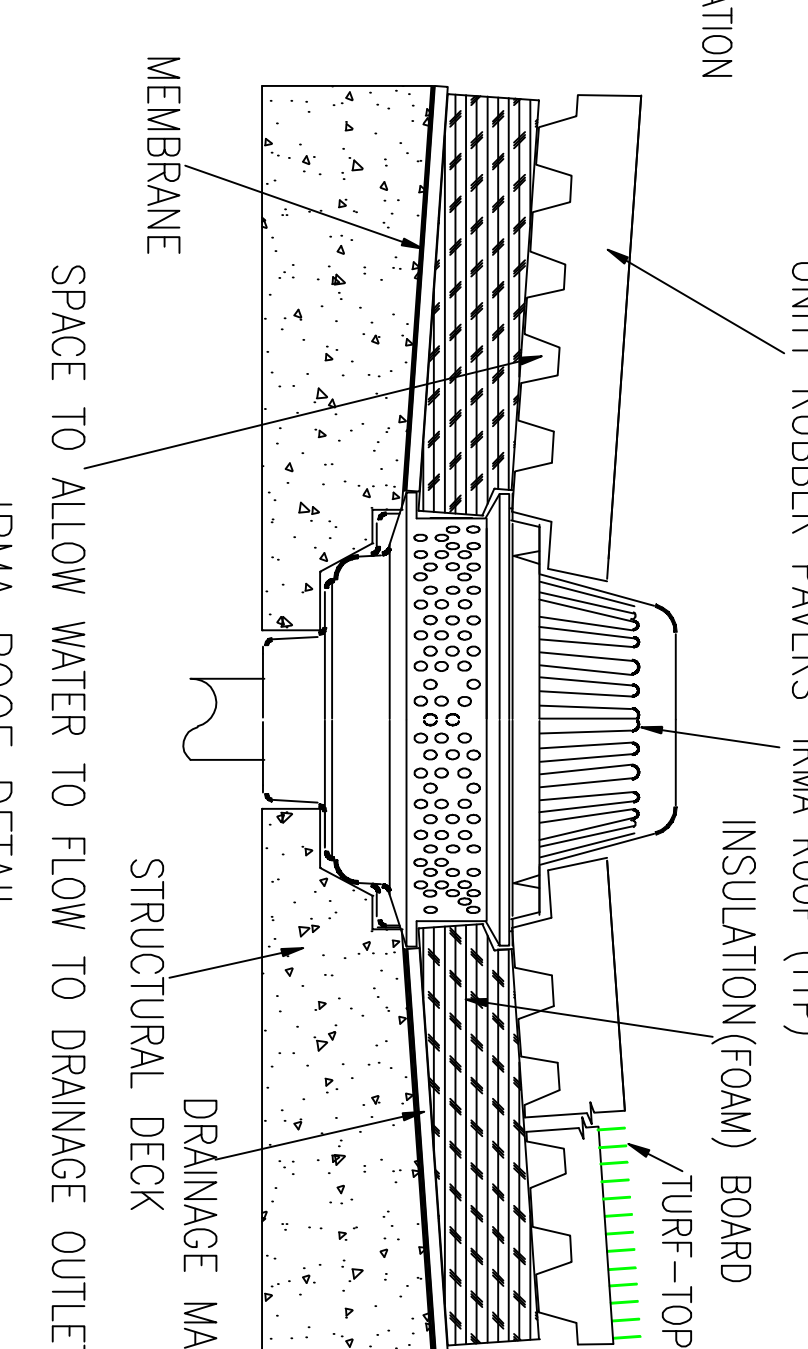
STANDARD DRAIN DETAIL



DOMES DRAIN DETAIL



ADJUSTABLE DUAL DRAIN DETAIL



IRMA ROOF DETAIL

General Notes

**BALLAST RUBBER PAVER PRODUCT DETAILS**

MINIMUM-10 LBS PER SQ FT

4	UPDATED	1/23/20
3	UPDATED	8/2/16
2	PATENT UPDATE	11-29-11
1	ORIGINAL	9-24-09
No.	Revision/Issue	Date

**UNITY CREATIONS LTD./UNITY SURFACING SYSTEMS**

SALES & MARKETING:  
56 BLOOMINGDALE RD.  
HICKSVILLE, NY 11801

T: (1-877) 41-UNITY  
F: (845) 246-1700  
E-MAIL: [productinfo@surfacingystems.com](mailto:productinfo@surfacingystems.com)  
WEB: [www.surfacingystems.com](http://www.surfacingystems.com)

**MANUFACTURING PLANT:**

UNITY CREATIONS, LTD.  
3997 ROUTE 9W (P.O. BOX 9)  
SAUGERTIES, NY 12477

**PROJECT:**

Project	Sheet
Date	
Scale	NOTED